



WILLEMS-LUCY srl

Global Plastic Pipe Systems

CARBON STEEL METAL EXPANSION JOINT WITH STAINLESS STEEL BELLOW FLANGED PN16

Carbon steel metal expansion joint with swiveling flanges, stainless steel bellow for high temperature networks.
Axial movement only.
With internal liner.



- Size :** DN25 to DN250
- Connection :** Flanges PN16 RF
- Min Temperature :** -20°C
- Max Temperature :** +300°C
- Max Pressure :** 16 Bars
- Specifications :** Axial movement
Stainless steel bellow
With internal liner
Swiveling flanges
- Materials :** Carbon steel flanges

Rue Marguerite BERVOETS, 51 à 1190 Bruxelles (Forest)
Tél : +32 2 538 48 46 ° www.willems-lucy.eu ° info@willems-lucy.eu

WILLEMS-LUCY srl
Global Plastic Pipe Systems

CARBON STEEL METAL EXPANSION JOINT WITH STAINLESS STEEL BELLOW FLANGED PN16

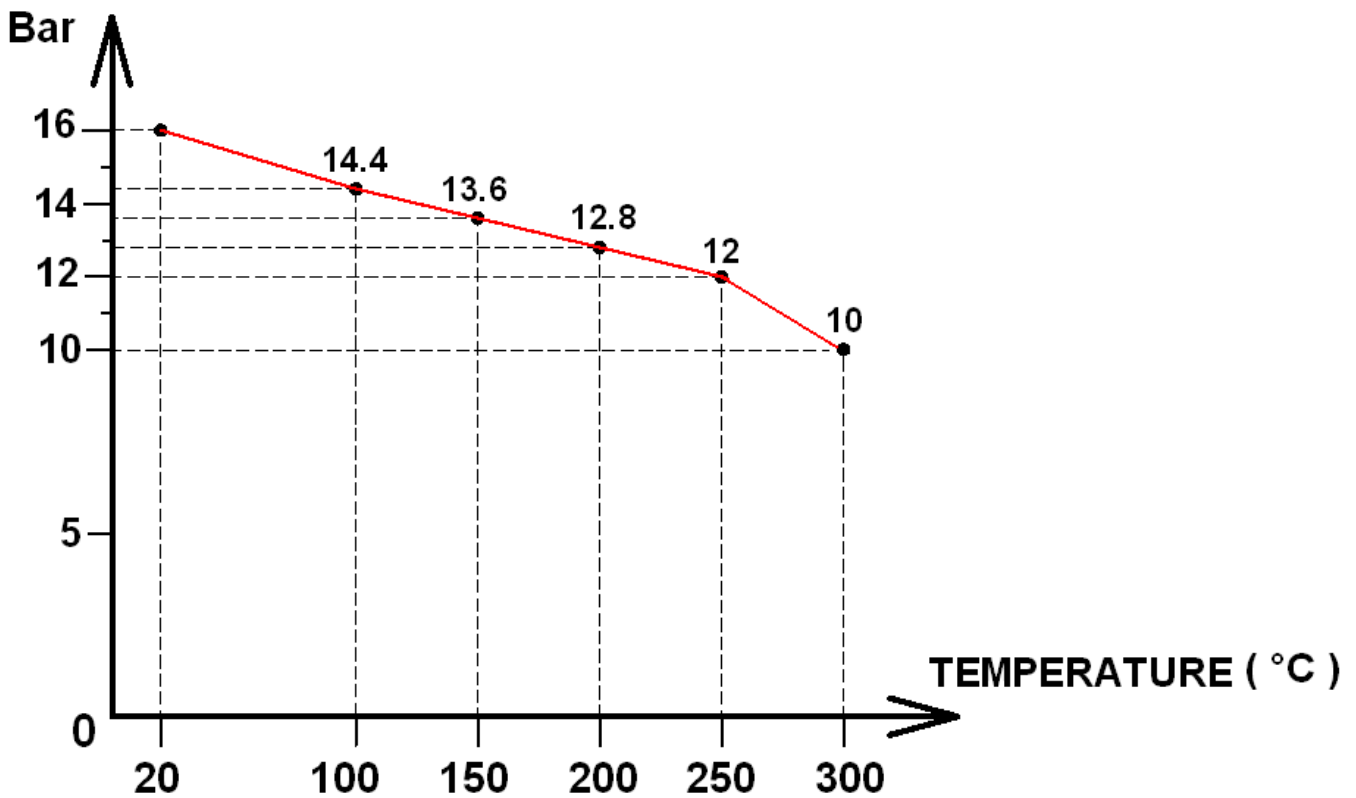
SPECIFICATIONS :

- Axial movement
- Respect the flow direction indicated by the arrow
- Stainless steel bellow
- With internal liner
- Carbon steel swiveling flanges PN16 R.F.

USE :

- For high temperature
- Min Temperature Ts : - 20°C
- Max Temperature Ts :+ 300°C
- Max Pressure Ps : 16 bars (see graph)
- Axial movement only

PRESSURE / TEMPERATURE GRAPH (STEAM EXCLUDED) :



RANGE :

- Expansion joint carbon steel flanges R.F.PN16 from DN25 to DN250

Rue Marguerite BERVOETS, 51 à 1190 Bruxelles (Forest)
Tél : +32 2 538 48 46 ° www.willems-lucy.eu ° info@willems-lucy.eu

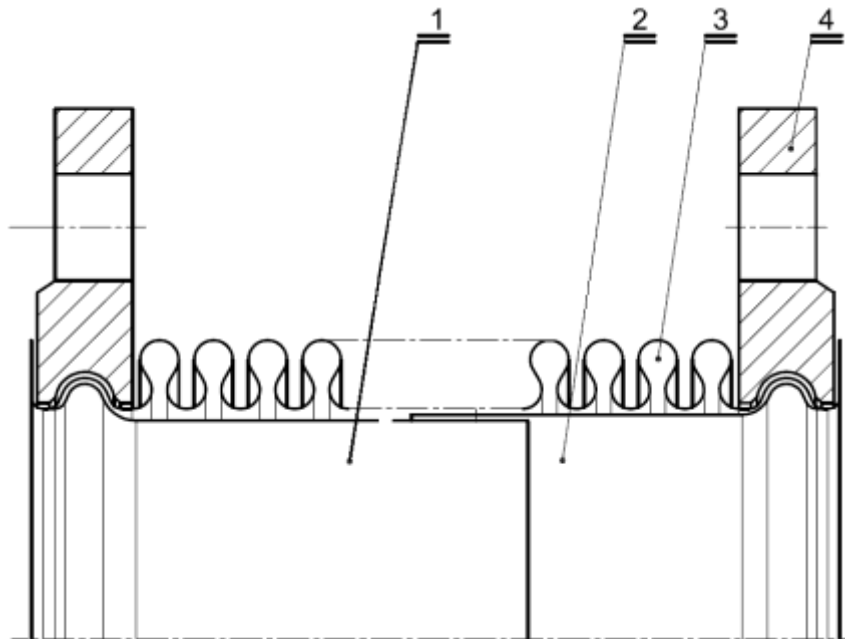
WILLEMS-LUCY srl
Global Plastic Pipe Systems

CARBON STEEL METAL EXPANSION JOINT WITH STAINLESS STEEL BELLOW FLANGED PN16

SPECIFICATIONS :

DN	25	32	40	50	65	80	100	125	150	200	250
Axial movement (mm)	± 11	± 10	± 13	± 20	± 20	± 25	± 32	± 33	± 40	± 33	± 40
Effective area (cm ²)	14.8	18.9	23.7	37	58	79.3	127.9	183.9	267.9	436.3	704
Axial spring rate (N/mm)	87.1	52.7	64.5	75.3	69.2	107.5	113.6	170.2	88.5	312.8	227.8
Ply thickness (mm)	0.3		0.4			0.5	0.6			0.8	1
Number of convulsions	17			20	16	15	20	16	20	16	14

MATERIALS :



Item	Designation	Materials
1	Internal liner	AISI 321
2	Internal liner	
3	Bellow	
4	Flanges	Steel St 37.2

Rue Marguerite BERVOETS, 51 à 1190 Bruxelles (Forest)
Tél : +32 2 538 48 46 ° www.willems-lucy.eu ° info@willems-lucy.eu

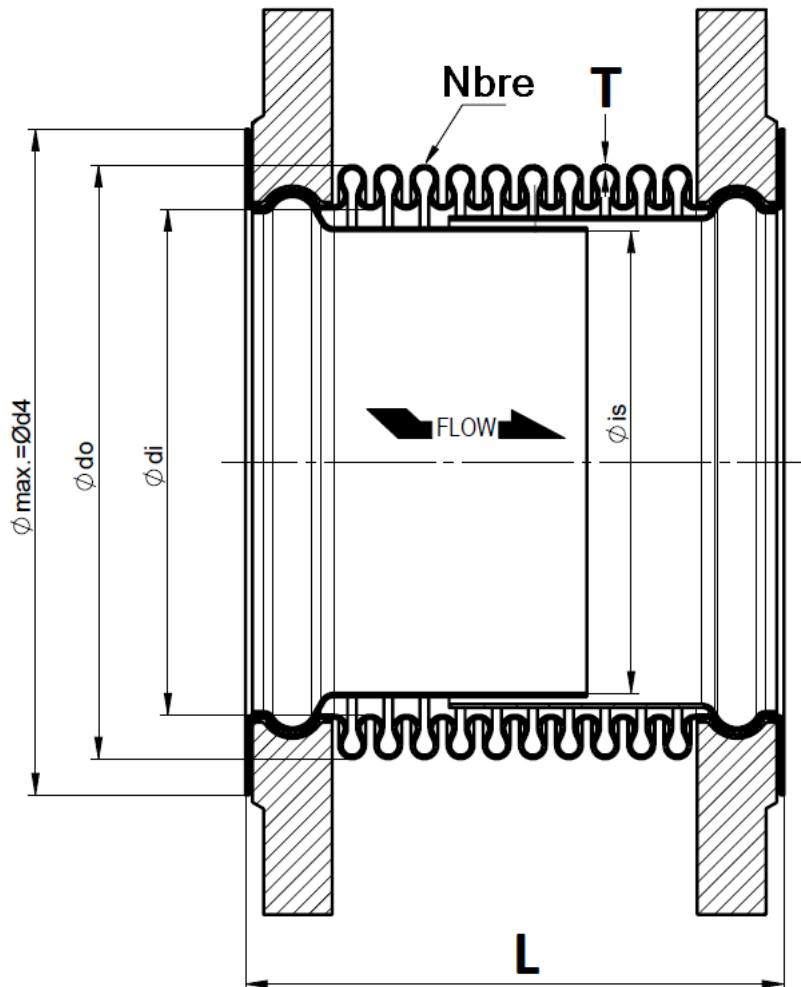


WILLEMS-LUCY srl

Global Plastic Pipe Systems

CARBON STEEL METAL EXPANSION JOINT WITH STAINLESS STEEL BELLOW FLANGED PN16

SIZE (in mm) :



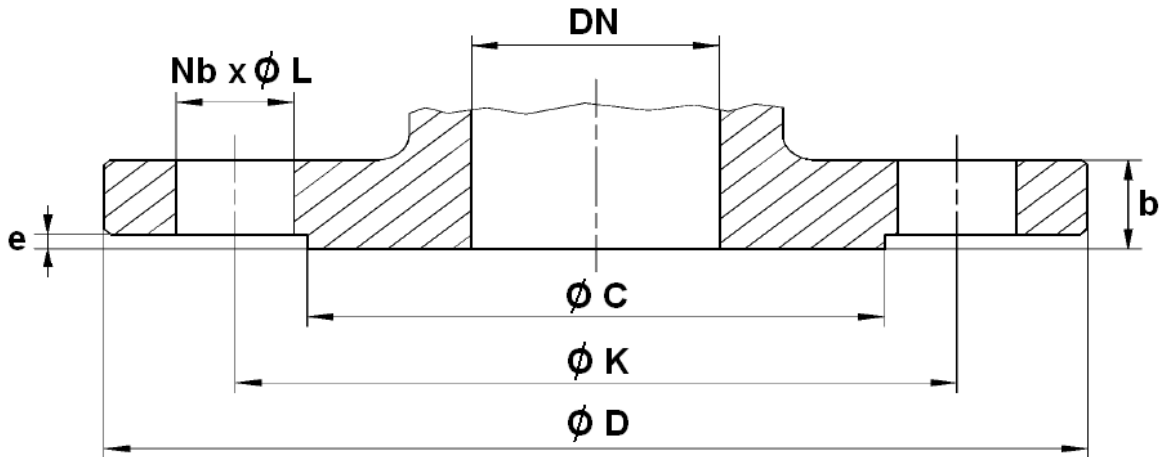
DN	25	32	40	50	65	80	100	125	150	200	250
L	105	105	120	150	140	155	220	190	270	275	285
Ø do	48.2	55.6	61	77	96	112	141	165	201	252	314
Ø di	38	42.4	48.3	60.3	76.1	88.9	114.3	139.7	168.3	219.1	273
Ø d4 (max)	68	78	88	102	122	138	158	188	212	268	320
Ø is	32	36	41.4	53.5	70	78	103.5	127.3	156	207	256
T	0.3	0.3	0.3	0.4	0.4	0.5	0.6	0.6	0.6	0.8	1
Waves Nbre	17	17	17	20	16	15	20	16	20	16	14
Weight (in Kg)	2.05	3.09	3.38	4.62	5.65	7.02	8.77	11.24	15.11	21.07	31
Ref.	1521025	1521032	1521040	1521050	1521065	1521080	1521100	1521125	1521150	1521200	1521250

Rue Marguerite BERVOETS, 51 à 1190 Bruxelles (Forest)
Tél : +32 2 538 48 46 ° www.willems-lucy.eu ° info@willems-lucy.eu

WILLEMS-LUCY srl
Global Plastic Pipe Systems

CARBON STEEL METAL EXPANSION JOINT WITH STAINLESS STEEL BELLOW FLANGED PN16

FLANGES SIZE (in mm) :



DN	25	32	40	50	65	80	100	125	150	200	250
Ø C	68	78	88	102	122	138	158	188	212	268	320
Ø D	115	140	150	165	185	200	220	250	285	340	405
Ø K	85	100	110	125	145	160	180	210	240	295	355
Nb x Ø L	4 x 14	4 x 18	4 x 18	4 x 18	4 x 18	8 x 18	8 x 18	8 x 18	8 x 23	12 x 23	12 x 27
b	16	16	16	18	18	20	20	22	22	24	26
e	2	2	3	3	3	3	3	3	3	3	4

STANDARDS :

- Manufacturer certified ISO 9001 : 2015
- DIRECTIVE 2014/68/EU : For Liquids and Gas of Group 1
 - DN25 : Article 4, §3 (SEP), no CE marking
 - DN32-50 : Risk Category I, CE marking
 - DN65-200 : Risk Category II, CE0408 marking
 - DN250 : Risk Category III, CE0408 marking
- Flanges R.F. according to EN 1092-1 PN16
- Designing according to EN 14917

ADVICE : Our opinion and our advice are not guaranteed and SFERACO shall not be liable for the consequences of damages. The customer must check the right choice of the products with the real service conditions.

Rue Marguerite BERVOETS, 51 à 1190 Bruxelles (Forest)
Tél : +32 2 538 48 46 ° www.willems-lucy.eu ° info@willems-lucy.eu